

**Quality and Productivity Commission  
30<sup>th</sup> Annual Productivity and Quality Awards Program  
"Heritage of Excellence"**

**2016 APPLICATION**

Title of Project (Limited to 50 characters, including spaces, using Arial 12 point font):

**NAME OF PROJECT: ASSESSOR CONTRIBUTION TO OPEN DATA WEBSITE**

**DATE OF IMPLEMENTATION/ADOPTION:** MAY 4, 2015  
(Must have been implemented at least one year - on or before July 1, 2015)

**PROJECT STATUS:**  Ongoing  One-time only

**HAS YOUR DEPARTMENT PREVIOUSLY SUBMITTED THIS PROJECT?**  Yes  No

**EXECUTIVE SUMMARY:** Describe the project in 15 lines or less using Arial 12 point font. State clearly and concisely what difference the project has made.

1  
2  
3  
4  
5  
6  
7  
8  
9  
10  
11  
12  
13  
14  
15

This project supports the County's Open Data Initiative by publishing 10 years' worth of detailed parcel information and assessment valuations totaling 24 million records for more than 2.3 million properties on the internet. This represents the largest set of assessment data ever published online in the United States. The project also supports a key goal established by Assessor Jeffrey Prang which is to promote transparency and to ensure that public data is easily accessible and free to the public. Significant technical hurdles had to be overcome requiring close cooperation with the vendor and the Chief Information Office (CIO). The Assessor's Office was among one of the first Los Angeles County departments to publish information using the County's Open Data Portal. Our assessment data is one of the most frequently viewed data on the site. This project also save taxpayers' time and money by eliminating the need to submit a request through our public service counter and to purchase the data.

**BENEFITS TO THE COUNTY**

(1) ACTUAL/ESTIMATED ANNUAL COST AVOIDANCE	(2) ACTUAL/ESTIMATED ANNUAL COST SAVINGS	(3) ACTUAL/ESTIMATED ANNUAL REVENUE	(1) + (2) + (3) = TOTAL ANNUAL ACTUAL/ESTIMATED BENEFIT	SERVICE ENHANCEMENT PROJECT
\$ 0	\$ 0	\$ 0	\$ 0	<input checked="" type="checkbox"/>

ANNUAL = 12 MONTHS ONLY

**SUBMITTING DEPARTMENT NAME AND COMPLETE ADDRESS**  
Los Angeles County Office of the Assessor  
500 W Temple St, Los Angeles, CA 90012

**TELEPHONE NUMBER**  
(213) 974-3211

**PROGRAM MANAGER'S NAME**  
Tim Grizzle

**TELEPHONE NUMBER**  
(213) 974-2720

  
**PRODUCTIVITY MANAGER'S NAME AND SIGNATURE**  
(PLEASE CALL (213) 893-0322 IF YOU DO NOT KNOW YOUR PRODUCTIVITY MANAGER'S NAME)  
Steven Hernandez

27-Jun-16

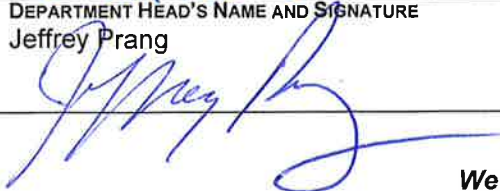
**EMAIL**  
tgrizzle@assessor.lacounty.gov

  
**PRODUCTIVITY MANAGER'S NAME AND SIGNATURE**  
(PLEASE CALL (213) 893-0322 IF YOU DO NOT KNOW YOUR PRODUCTIVITY MANAGER'S NAME)  
Steven Hernandez

6/27/16

**TELEPHONE NUMBER**  
(213) 974-3123

**EMAIL**  
Shernandez@assessor.lacounty.

  
**DEPARTMENT HEAD'S NAME AND SIGNATURE**  
Jeffrey Prang

7/1/16

**TELEPHONE NUMBER**  
(213) 974-3101

Quality and Productivity Commission  
**30<sup>th</sup> Annual Productivity and Quality Awards Program**  
*“Heritage of Excellence”*

**2016 APPLICATION**

Title of Project (Limited to 50 characters, including spaces, using Arial 12 point font):

**NAME OF PROJECT:      ASSESSOR CONTRIBUTION TO OPEN DATA WEBSITE**

**1<sup>st</sup> FACT SHEET – LIMITED TO 3 PAGES ONLY:** Describe the **Challenge, Solution, and Benefits** of the project. State clearly and concisely what difference the project has made.  
Use Arial 12 point font

**Challenge**

To support the County’s Open Data Initiative to make government data readily available to anyone with a computer and Internet connection. Individual departments were directed to provide information that would be publically available through a single platform. This initiative was initially proposed by Supervisor Mark Ridley-Thomas at a board meeting on January 20, 2015, who proposed a project that “will make the county more transparent and accountable to the people it serves.” The initiative was approved unanimously.

**Solution**

A task force was assembled to identify data sets at the county’s disposal that could be made available in a machine-readable format and added to the new open-data portal. The selected vendor, Socrata, worked closely with the CIO to configure and customize the Open Data Portal. The County Open Data website was launched in May, 2015 with ten County departments participating in the initial launch, including the Assessor’s Office.

The Assessor’s Office contributed several data sets as part of the initial launch, including the complete assessment roll for more than 2.3 million properties. Despite technical hurdles, we were ultimately able to publish 10 years of detailed parcel information and assessment valuations as a single data set containing nearly 24 million records, which represents the largest set of assessment data ever published online in the United States. The Socrata software was initially unable to handle data sets of this size, as it far exceeded the volume of information ever published for any of their other customers. There was extensive collaboration with the CIO and vendor, which resulted in several modifications to the software to support extremely large data sets.

Consumers of this data include the public, students, private sector organizations, and even other County departments.

Quality and Productivity Commission  
30<sup>th</sup> Annual Productivity and Quality Awards Program  
"Heritage of Excellence"

2016 APPLICATION

Title of Project (Limited to 50 characters, including spaces, using Arial 12 point font):

**NAME OF PROJECT: ASSESSOR CONTRIBUTION TO OPEN DATA WEBSITE**

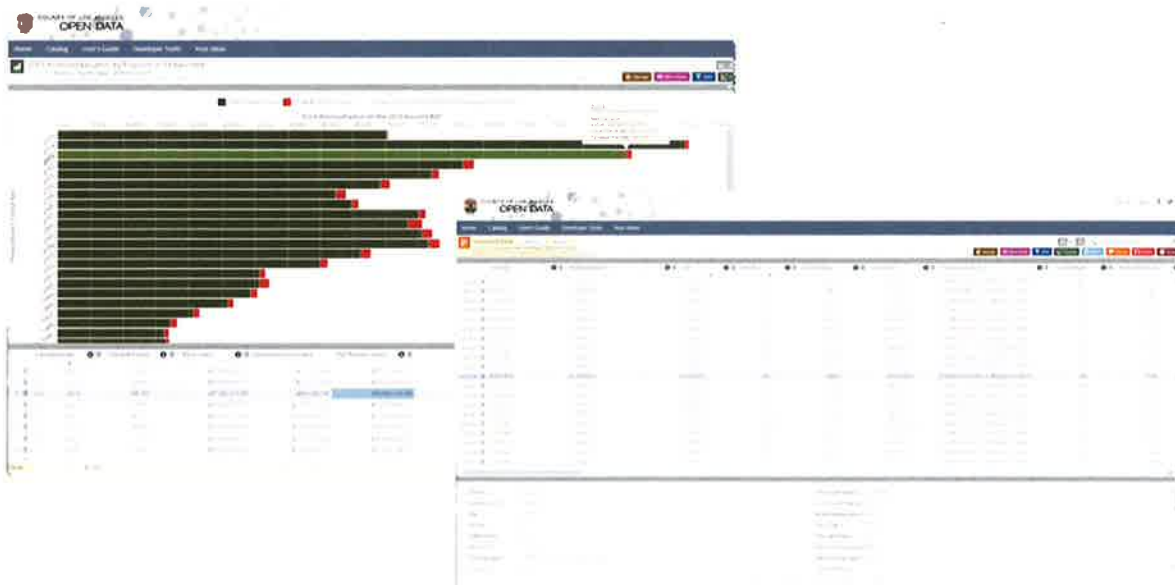
Use Arial 12 point font

**Benefits**

The Open Data Portal makes it easy for the public to filter, sort, view, and download data in a wide variety of formats. In addition, the Portal offers customizable charting and Geographic Information Systems (GIS) mapping capabilities that allows the public to easily aggregate and display information visually. Users can quickly and easily query and download information from a public website, as opposed to having to pay to purchase data from a public service counter. Combining data over many years also allows users to perform more complex analysis and analytics.

Other benefits that have been discovered includes using the Open Data website as a more efficient way to share data with other county departments. It also eliminates the need for members of the public to pay for this data or the requirement to submit data requests through the public service counter. Assessment data has proven to be very popular and remains some of the most viewed data on the Los Angeles County Open Data Portal.

The project also supports a key goal established by Assessor Jeff Prang and the Los Angeles County Board of Supervisors to promote transparency and to ensure that public data is easily accessible.



Quality and Productivity Commission  
**30<sup>th</sup> Annual Productivity and Quality Awards Program**  
*"Heritage of Excellence"*

**2016 APPLICATION**

Title of Project (Limited to 50 characters, including spaces, using Arial 12 point font):

**NAME OF PROJECT: ASSESSOR CONTRIBUTION TO OPEN DATA WEBSITE**

**LINKAGE TO THE COUNTY STRATEGIC PLAN (DETAIL IS REQUIRED FOR COUNTY DEPARTMENTS):** Use Arial 12 point font

Strategic Plan Goal #2: Community Support and Responsiveness

- Strategic Initiative 1: Customer Service Innovation/Enhancement  
Redesigned Websites for Customer Engagement and Government  
Transparency

**Quality and Productivity Commission**  
**30<sup>th</sup> Annual Productivity and Quality Awards Program**  
**"Heritage of Excellence"**

**2016 APPLICATION**

Title of Project (Limited to 50 characters, including spaces, using Arial 12 point font):

**NAME OF PROJECT:      ASSESSOR CONTRIBUTION TO OPEN DATA WEBSITE**

**COST AVOIDANCE, COST SAVINGS, AND REVENUE GENERATED (ESTIMATED BENEFITS TO THE COUNTY):** If you are claiming cost benefits, include a calculation on this page. You must include an explanation of the County cost savings, cost avoidance or new revenue that matches the numbers in the box. Remember to keep your supporting documentation. Use Arial 12 point font

**Cost Avoidance:** Costs that are eliminated or not incurred as a result of program outcomes.

**Cost Savings:** A reduction or lessening of expenditures as a result of program outcomes.

**Revenue:** Increases in existing revenue streams or new revenue sources to the County as a result of program outcomes.

(1) ACTUAL/ESTIMATED ANNUAL COST AVOIDANCE	(2) ACTUAL/ESTIMATED ANNUAL COST SAVINGS	(3) ACTUAL/ESTIMATED ANNUAL REVENUE	(1) + (2) + (3) TOTAL ANNUAL ACTUAL/ESTIMATED BENEFIT	SERVICE ENHANCEMENT PROJECT
\$ 0	\$ 0	\$ 0	\$ 0	<input checked="" type="checkbox"/>

**ANNUAL = 12 MONTHS ONLY**

**Quality and Productivity Commission**  
**30<sup>th</sup> Annual Productivity and Quality Awards Program**  
**"Heritage of Excellence"**

**2016 APPLICATION**

Title of Project (Limited to 50 characters, including spaces, using Arial 12 point font):

**NAME OF PROJECT: ASSESSOR CONTRIBUTION TO OPEN DATA WEBSITE**

**FOR COLLABORATING DEPARTMENTS ONLY**

*(For single department submissions, do not include this page)*

**DEPARTMENT NO. 2 NAME AND COMPLETE ADDRESS**

CHIEF INFORMATION OFFICE, 350 S FIGUEROA, STE. 188, LOS ANGELES, CA 90071

**PRODUCTIVITY MANAGER'S NAME AND SIGNATURE**



**KIMBERLY JO**  
 EMAIL: KJO@CIO.LACOUNTY.GOV

**DEPARTMENT HEAD'S NAME AND SIGNATURE**



**SACHI HAMAI**  
 EMAIL: SHAMAI@CIO.LACOUNTY.GOV
